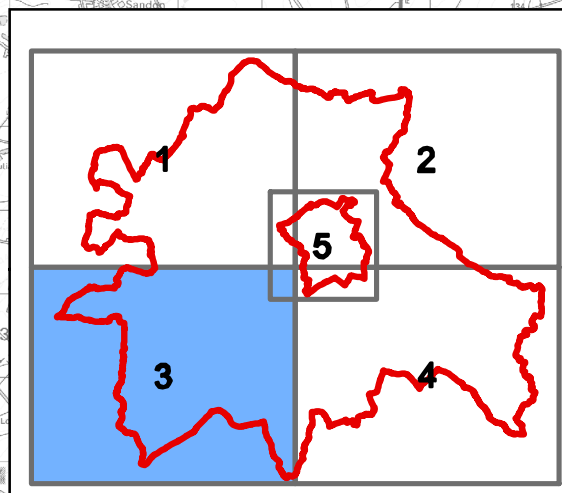



KEY

- South Cambridgeshire DC & Cambridge City Council Boundaries
- More
- Intermediate
- Less

NOTE: The maps only provide a general indication of areas which may be more likely to suffer from surface water flooding, and have been produced by the Environment Agency using a strategic broad scale modelling approach assuming an extreme rainfall event. They do not show the susceptibility of individual properties to surface water flooding. They should not be used to substitute more detailed investigations at a site specific scale, that allow a more accurate assessment of surface water flooding to be made.





TITLE:
SOUTH CAMBRIDGESHIRE DC
AND CAMBRIDGE CITY COUNCIL
LEVEL 1 SFRA

FIGURE No:
SURFACE WATER FLOOD RISK
1402 - B - 4.3

Reproduced from Ordnance Survey data by permission of the Controller of Her Majesty's Stationary Office. © Crown copyright (2008). All rights reserved. License No. 0100022500. © 2008 NAVTEC